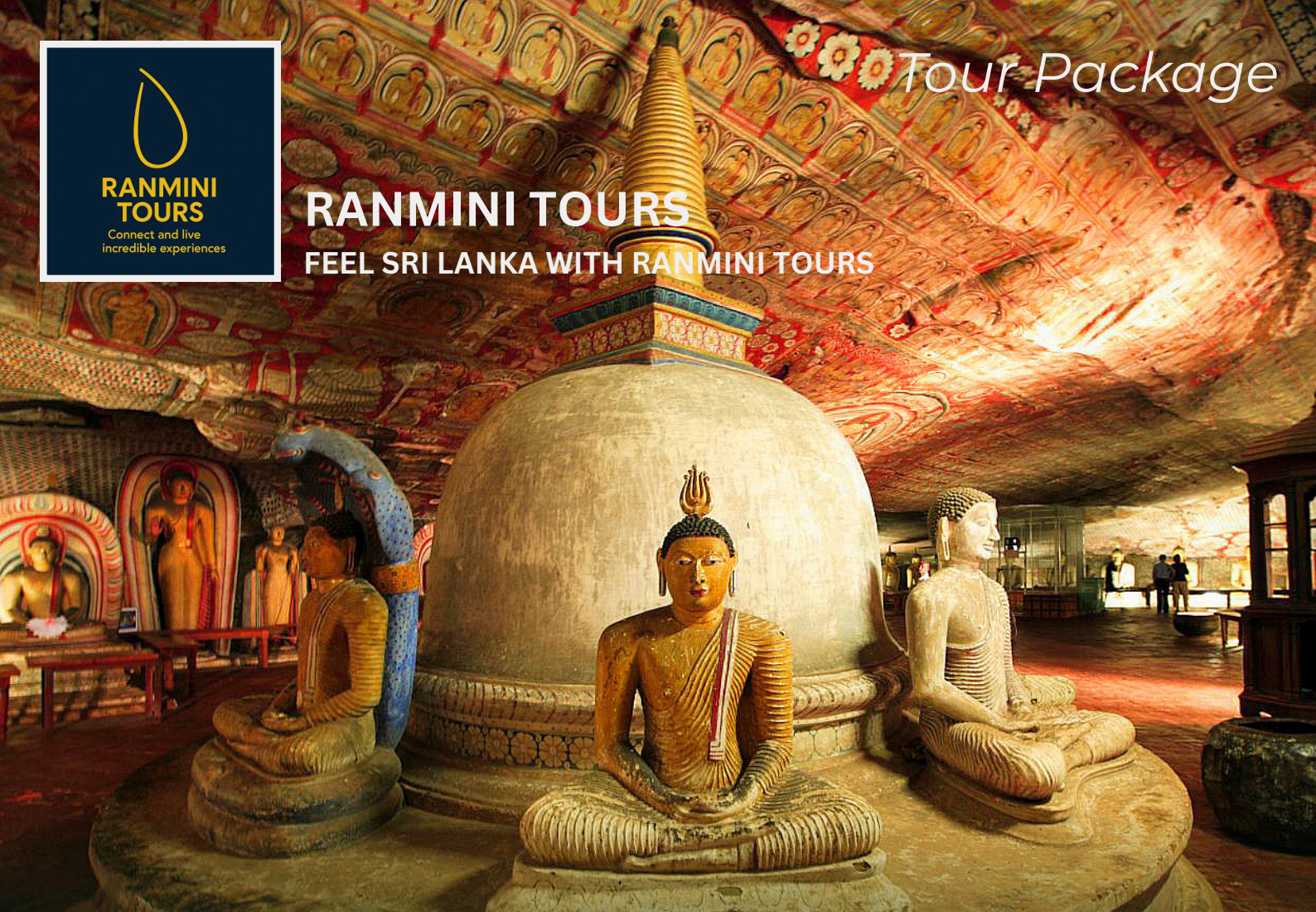




Tour Package

RANMINI TOURS

FEEL SRI LANKA WITH RANMINI TOURS



***"Step into a timeless story.
Sri Lanka's cultural heritage awaits your discovery."***

Welcome to Ranmini Tours, your trusted partner in discovering the unparalleled beauty and rich heritage of Sri Lanka. We are a passionate team dedicated to crafting unforgettable travel experiences, ensuring every moment of your journey through our island paradise is filled with wonder, comfort, and authentic encounters.

We invite you to explore the captivating beauty, rich history, and warm hospitality of Sri Lanka with Ranmini Tours. Let us transform your travel dreams into a breathtaking reality. Contact us today to start planning your bespoke Sri Lankan adventure!

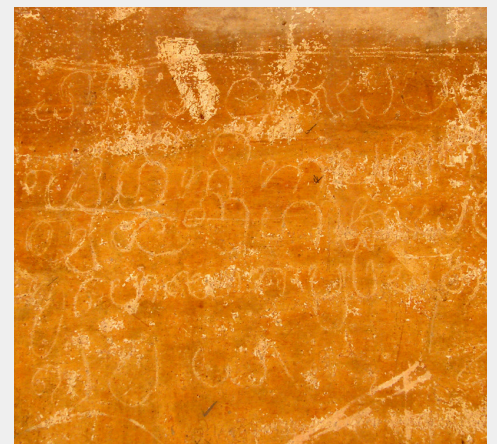
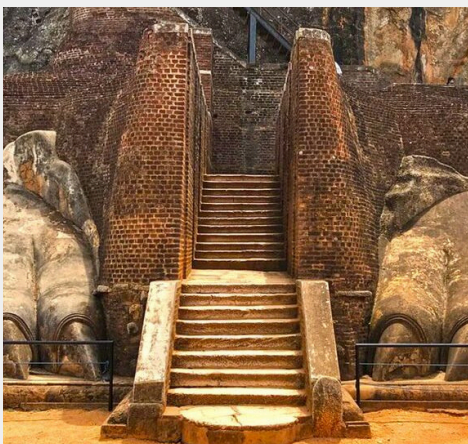


Ancient Wonders, Highlands & Wildlife (12 Days / 11 Nights)

This comprehensive tour package offers an immersive journey through Sri Lanka's ancient capitals, lush tea highlands, vibrant wildlife sanctuaries, and serene coastal areas. Experience history, nature, adventure, and local culture with comfort and convenience.

Day 1: Arrival & Sigiriya's Ancient Wonders

- Morning/Afternoon: Meet and greet at Bandaranaike International Airport (CMB).
- Transfer: Begin your scenic journey to Sigiriya (approx. 3.5-4 hours).
- En Route: Visit the Pinnawala Elephant Orphanage, a fantastic opportunity to see rescued elephants.
- Afternoon: Arrive in Sigiriya and check into your accommodation.
- Late Afternoon: Ascend the magnificent Sigiriya Rock Fortress (Entrance Fee: approx. \$35 per person), often referred to as the "Eighth Wonder of the Ancient World." Explore the ancient frescoes, gardens, and enjoy panoramic views from the summit.
- Overnight: Sigiriya





Day 2: Wildlife Safari & Cultural Immersion in Sigiriya

- Morning: Embark on a thrilling jeep safari at a chosen National Park (e.g., Minneriya, Kaudulla, or Eco Park) for a chance to witness large herds of elephants and other wildlife in their natural habitat. Your driver will assist in arranging the best safari option based on the season.
- Afternoon: Experience a memorable Traditional Village Tour (Cost: approx. \$25 per person). This immersive experience offers a glimpse into authentic Sri Lankan village life, including a bullock cart ride, catamaran boat ride, and a traditional cooking demonstration with a local lunch.
- Late Afternoon: Hike Pidurangala Rock, offering stunning views of Sigiriya Rock Fortress, especially beautiful during sunset.
- Evening: Explore the ancient city of Polonnaruwa (approx. 67 km from Sigiriya), the island's medieval capital (11th & 12th centuries) and a UNESCO World Heritage Site. Discover its well-preserved ruins, including temples, palaces, and Buddha statues.
- Overnight: Sigiriya



Day 3



Day 3: Cave Temples, Spices & Kandy's Cultural Heart

- Morning: Depart from Sigiriya and drive to Kandy (approx. 2.5-3 hours).
- En Route: Visit the Dambulla Cave Temple (Entrance Fee: approx. LKR 2000 per person), a UNESCO World Heritage Site featuring magnificent Buddha images and frescoes within ancient cave temples.
- Afternoon: Explore a Spice and Herbal Garden, where you can learn about the various spices that first drew Europeans to the island and their medicinal properties.
- Late Afternoon: Visit the historical Aluvihara Temple, a significant Buddhist monastery where the Pali Canon was first written down.
- Evening: Immerse yourself in Sri Lankan culture with a vibrant Cultural Show, featuring traditional Kandyan dancing, mask dances, and thrilling fire dances.
- Overnight: Kandy





Day 4: Heeloya Village Experience & Sacred Tooth Relic

- Morning: Embark on a unique excursion to Heeloya, a rural and remote village nestled in the Knuckles Mountain Range. Enjoy a 3-4 hour trek through this amazing vegetative village, experiencing the authentic lifestyles of tropical villagers. Witness traditional paddy cultivation with buffalos, home gardening, spice plantations, handicrafts, and beekeeping.
- Afternoon: Visit the Sri Dalada Maligawa (Temple of the Sacred Tooth Relic), a UNESCO World Heritage Site and one of the most sacred Buddhist pilgrimage sites in the world, housing the tooth relic of Lord Buddha.
- Overnight: Kandy



Day 5



Day 5: Tea Country & World's Most Scenic Train Journey to Ella

- Morning: Depart from Kandy and head towards Ella (approx. 4-5 hours drive to Nanu Oya, plus train journey).
- En Route: Stop at a Tea Plantation and Factory to learn about the tea-making process, from leaf to cup, and enjoy a fresh cup of Ceylon tea.
- Afternoon: Witness the majestic Ramboda Waterfalls.
- Late Afternoon: Experience one of the world's most beautiful train journeys from Nanu Oya to Ella. This breathtaking ride winds through lush tea estates, misty mountains, and picturesque villages. Your driver will meet you at Ella station.
- Overnight: Ella

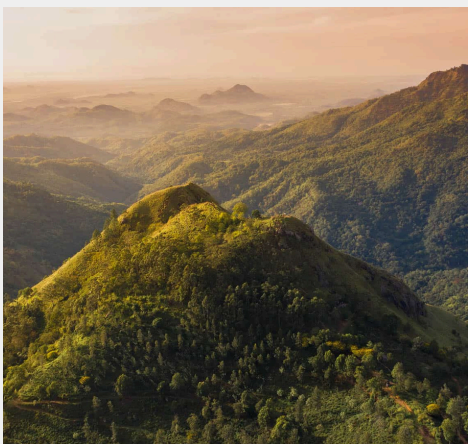


Day 6



Day 6: Ella's Peaks & Adventures

- Morning: Hike to Ella Rock (trek approx. 5 hours round trip), offering rewarding panoramic views of the Ella Gap and surrounding landscapes.
- Afternoon: Trek to Mini Adam's Peak, a relatively easier climb with stunning views reminiscent of the larger Adam's Peak.
- Late Afternoon: Visit the iconic Nine Arch Bridge, also known as the "Bridge in the Sky," a marvel of colonial-era engineering.
- Optional Adventure: Experience the thrill of the Flying Ravana Mega Zip Line, Sri Lanka's first-ever mega zip line, soaring over the beautiful hills (Cost: Separate).
- Overnight: Ella

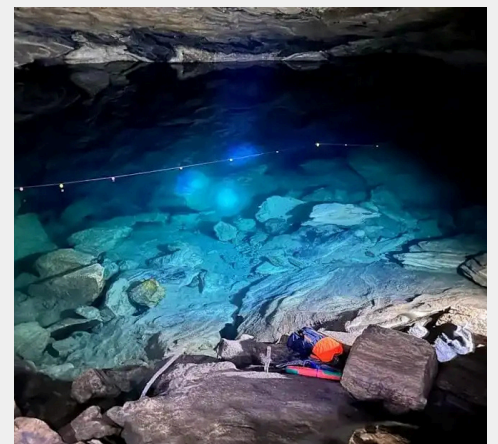
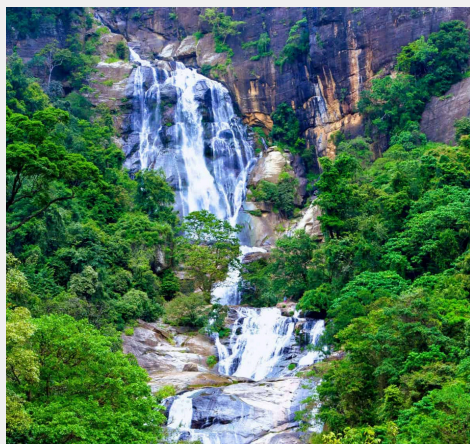


Day 7



Day 7: Waterfalls, Hidden Ponds & Gal Oya Exploration

- Morning: Depart from Ella and drive towards Gal Oya (approx. 3-4 hours).
- En Route: Stop to admire the impressive Rawana Waterfall.
- Afternoon: For the adventurous, explore Nil Diya Pokuna, a mysterious underwater pond believed to have been built by King Ravana. (Caution should be taken during this journey).
- Late Afternoon: Arrive in Gal Oya and check into your accommodation.
- Evening: If time permits, begin exploring the unique surroundings of Gal Oya.
- Overnight: Gal Oya.



Day 8



Day 8: Gal Oya National Park Safari & Ancient Villages

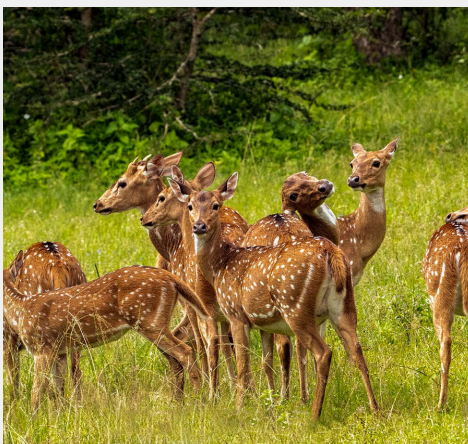
- Morning: Experience a unique Boat Safari at Gal Oya National Park, the only national park in Sri Lanka offering boat safaris. This allows you to observe elephants, crocodiles, and various bird species from the water, often seeing elephants swimming between islands.
- Afternoon: Visit Niagala Makara, a local point of interest.
- Late Afternoon: Explore Ratugala Ancient Village, gaining insights into traditional village life and ancient practices.
- Overnight: Gal Oya





Day 9: Udawalawe Wildlife & Elephant Transit Home

- Morning: Depart from Gal Oya and drive to Udawalawe (approx. 2.5-3 hours).
- Afternoon: Embark on an exciting jeep safari at Udawalawe National Park (established 1972, area 32,000 hectares). The park is famous for its large population of 450-600 elephants, as well as many other animals and birds. Your driver will arrange a highly recommended safari service at a competitive, all-inclusive price for the safari itself.
- Overnight: Udawalawe

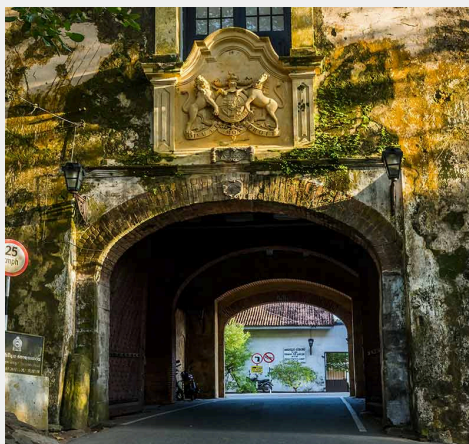


Day 10



Day 10: Turtle Conservation & Galle Fort Charm

- Morning: Visit the Elephant Transit Home in Udawalawe, where orphaned elephants are cared for before being released back into the wild. You can witness their feeding time, a truly fantastic experience.
- Transfer: Drive to Galle (approx. 2.5-3 hours).
- Afternoon: Visit a Turtle Hatchery Project along the coast, learning about sea turtle conservation efforts and possibly seeing baby turtles.
- Late Afternoon: Arrive in Galle and check into your accommodation.
- Evening: Begin exploring the historic Galle Fort, a UNESCO World Heritage Site with a rich colonial past.
- Overnight: Galle.





Day 11: Coastal Adventures & River Safari

- Morning: Head to Mirissa (a short drive from Galle) for an exciting Whale and Dolphin Watching Tour (seasonal, typically November to April for best sightings, but check closer to your travel date for success rates). (Cost: Separate).
- Afternoon: Enjoy a relaxing Madu River Boat Safari, navigating through mangroves and observing diverse birdlife and local fishing communities. (Cost: Separate).
- Late Afternoon/Evening: Further explore the charming streets, boutiques, and cafes within Galle Fort.
- Overnight: Galle



Day 12



Day 12: Departure

- Morning: Enjoy your final Sri Lankan breakfast.
- Transfer: Your driver will pick you up from your hotel approximately 6 hours before your departure flight time for a safe and comfortable transfer to Bandaranaike International Airport (CMB).



Important Notes:

- Package Rate: \$75 per person per day (includes transport, driver service, and daily refreshments. Accommodation and entrance fees are NOT included.)
- Accommodation is not included in the \$75 per day package rate. This package focuses on transport, driver service, and daily refreshments..
- It is recommended to check current entrance fees and activity prices closer to your travel date, as they can be subject to change by local authorities or operators.
- Accommodation: This package does NOT include accommodation. You are responsible for booking and paying for your stays at each location.
- Entrance Fees & Optional Activities: As stated, most entrance fees for attractions (e.g., Sigiriya, Dambulla, National Parks, Village Tour, Zip Line, Whale Watching, Madu River Safari) are NOT included in the \$75/day package rate, except for the Udawalawe safari which is arranged by the driver as an "all-inclusive package" for the safari itself. It is recommended to check current entrance fees and activity prices closer to your travel date, as they can be subject to change by local authorities or operators.
- Flexibility: This itinerary is a suggestion and can be customized based on your preferences, interests, and the amount of time you wish to spend at each location. Discuss any desired changes with your driver.
- Sri Pada/Adam's Peak: Please note that this itinerary does NOT include Sri Pada (Adam's Peak) as it was not explicitly mentioned in the daily breakdown for this specific request, but was in a previous one. If you wish to include it, adjustments to the itinerary would be necessary.
- Travel Times: All travel times are approximate and can vary based on road conditions, traffic, and stops.
- Comfort: The luxury fully-insured car ensures a comfortable and safe journey throughout your tour.

Enjoy your unforgettable journey through the Pearl of the Indian Ocean!



Reservation

+94 76 684 2530

info@ranminitours.com

www.ranminitours.com